



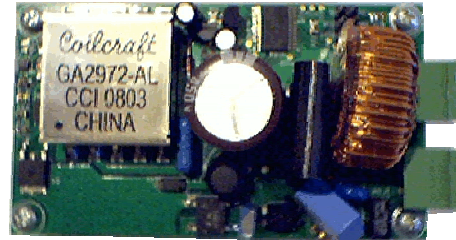
# LTD240 LED Triac Driver

Bibaja, LLC  
615 Trinkling Creek  
Felton, CA 95018  
[www.bibaja.com](http://www.bibaja.com)

## Triac Dimmable LED Driver with Active Power Factor Correction

### FEATURES

- 80-265VAC Universal Input
- Active Power Factor Correction (>99% at full brightness)
- Tunable microprocessor dimming control
- Low Cost



WxLxH = 2" x 3.5" x 1.2"

### OVERVIEW

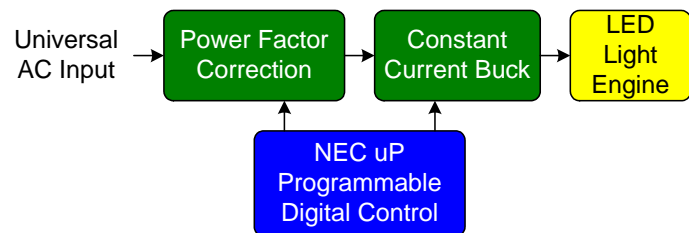
The LTD240 features universal input, active power factor correction, and microprocessor control that allows fine tuning the dimming operation with various triac-based switches. With a single design, you may create a product suited for worldwide installation.

High power factor correction (>99% full brightness) exceeds regulatory requirements for light fixtures making this driver the perfect fit for commercial lighting applications.

This flexible design scales from low power (3 watt light engines) up to greater than 60W light engines. Perfect for low power accent lights and high power 6" downlights.

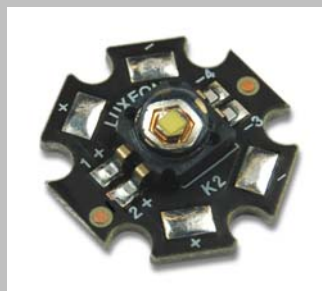
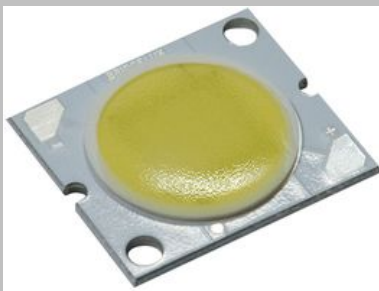
Non-isolated circuitry keeps the efficiency high and the cost low. The final light fixture design must isolate the driver and light engine from the end user to meet UL/CE requirements

### BLOCK DIAGRAM



### FIXTURE REQUIREMENTS:

- LED Light engine + Heatsink
- Isolation to meet UL/CE Requirements
- Circuit board mounting/wiring
- Edison base if appropriate for application



## Specifications

### Power Requirements:

*Power Input:*

80-265VAC

*Power Output:*

Adjustable, 3 to 100 watts, 15watts typical

Efficiency: Varies with light engine/output, ~84% at 15-20 watts

### Operating Conditions:

Temperature: 0C to 70C

Humidity: 90% non-condensing

### Microprocessor:

NEC/Renesas uP78K0/Ix2 8-Bit,

8K or 16K FLASH

512 or 768 bytes RAM

### Options/Customization:

Tunable dimming levels (firmware)

Digital dimming control

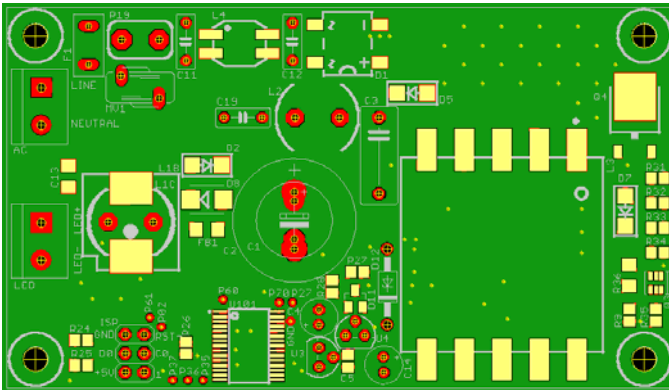
0-10V Analog Control

Different sizes/footprints based on customer need

Passive power factor correction (increase efficiency)

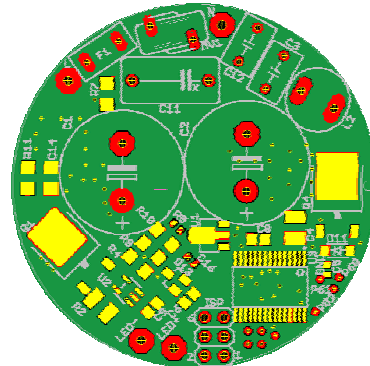
277VAC voltage input support

### ACTIVE PFC VERSION:



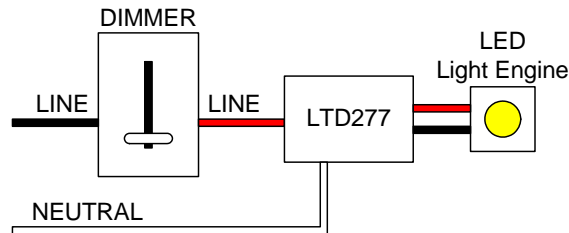
Dimensions: W x L x H = 2" x 3.5" x 1.2"

### PASSIVE PFC VERSION:



Dimensions: 1.9" Diameter

### WIRING:



### ORDERING

Evaluation version with Active PFC available. Please specify voltage and current required for your LED light engine.

Default LTD240 supports 35V at 350ma (10 3.5V LEDs in series).

Ask about customizing the design to fit your lighting solution:

[sales@bibaja.com](mailto:sales@bibaja.com)

408-786-5825

<http://www.bibaja.com>