



IOPoint Module Evaluation Board with Power Supply & Coupling

Features

- Full schematic included (in user's guide)
- UL approved DC adapter with integrated coupling circuit
- Power and Service indicator LEDs
- Transmit (TX), receive (RX), and band in use (BIU) network activity indicator LEDs
- Proto area with I/O and power connections
- Reset and service pushbuttons
- Optional 4-20ma current output
- Optional pulse meter input
- Optional RS232 serial interface
- Optional two channel 12-bit A/D converter inputs compatible with Decagon ECH2O Soil Moisture and Temperature probes

Applications

The IOPoint-EVB provides a platform for evaluating the IOPoint-PL programmable I/O module and for prototyping your IOPoint-PL based application.

All IOPoint-EVB boards include a standard 0.1" spaced proto area with power, ground, and I/O connections.

A variety of I/O options are available for the IOPoint-EVB including:

- 4 to 20ma current output
- Pulse meter input
- 3-wire RS232 Interface (screw terminals)
- Two channel 12-bit A/D converter inputs

The combination of 4-20ma output and pulse meter input may be used to build a flow rate controller. The 4-20ma output is used to control a proportional valve while the pulse meter input monitors the flow rate from a water meter.



Communication Options

The IOPoint-EVB includes on-board coupling for power line network communications using IOPoint-PL modules.

An optional pluggable screw terminal provides an interface for LONWORKS Free Topology (TP/FT10) or RS485 communications. Control modules for TP/FT-10 and RS485 are available from Echelon (www.echelon.com).

Future IOPoint models will include TP/FT-10 and RS485 communications and will support other communication protocols. If you have an immediate need for TP/FT-10 or RS485 LonWorks modules, [contact us](#) today!

Customization

Bibaja offers customized firmware to suit your needs. [Contact us](#) for more information and to request a quote.

Ready-Made applications are available for the IOPoint-PL products. Suggestions and ideas for future Ready-Made applications are always welcome.

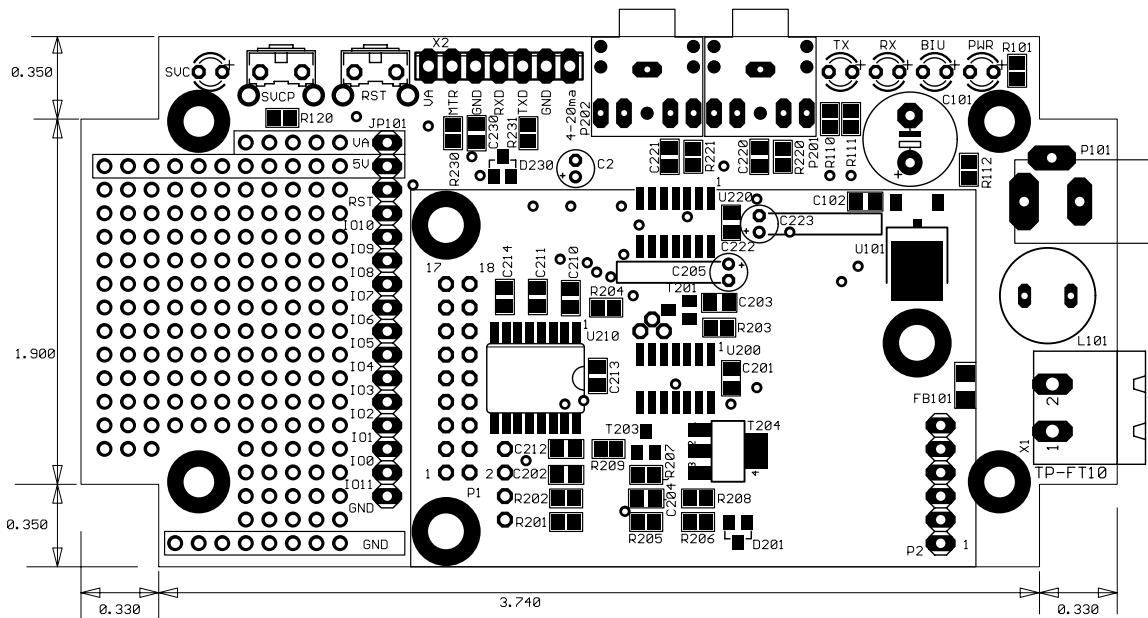
Specifications

Operating Temperature	-20C to 70C
Storage Temperature	-50C to 85C
AC Supply voltage	120/240 (depends on wall plug adapter)
VA Supply	10.8 to 18V
5V Supply	4.75 to 5.25V

Board Dimensions and Layout

The IOPoint-EVB is designed to fit the FLXT-4624 enclosure from PacTec. Enclosures are available on Bibaja's website at <http://www.bibaja.com/cart> with cutouts to match the IOPoint-EVB.

This diagram shows the board dimensions and the layout of the components on the IOPoint-EVB:



Schematics for the IOPoint-EVB are available for free in the User's Guide for the IOPoint-EVB.

Ordering Information

Order online at <http://www.bibaja.com/cart>.

IOPoint-EVB US	Evaluation Board with US Tamura Power Adapter
IOPoint-EVB EU	Evaluation Board with European Tamura Power Adapter

LONWORKS is a registered trademark of Echelon Corporation.
Bibaja and the Bibaja logo are trademarks of Bibaja Landscape Automation, LLC